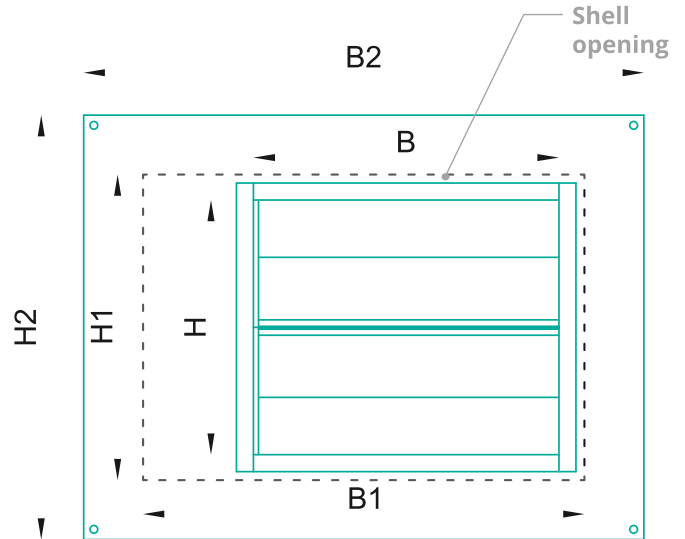
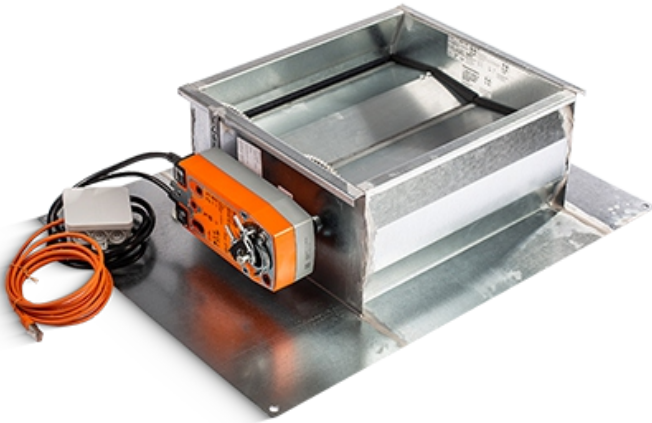


# MULTILEAF DAMPER

## Flush-mounted installation version

### Product illustration



### Product features

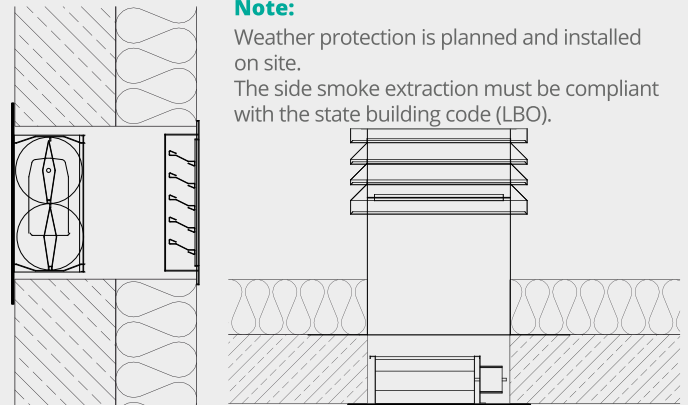
- Standard dimensions of the multileaf damper, see table
- Special sizes on request
- Air tightness class 4 (GEG-compliant)
- Limit switch for detecting the damper position (OPEN or CLOSED)
- Designed as NSHEV (according to DIN EN 12101-2)
- Installation in existing opening. Thus no restriction of the existing safety zone
- Silent drive – soundless opening in ventilation mode
- Additional weather protection required

### Installation & details

Flush-mounted installation in the shell opening to the side and/or in the ceiling

**Note:**

Weather protection is planned and installed on site.  
The side smoke extraction must be compliant with the state building code (LBO).



#### MULTILEAF DAMPER JK-165 (flush-mounted installation)

Internal dimensions of damper (mm) W x H	360 x 300	400 x 390	440 x 540	540 x 640	640 x 740	740 x 840	840 x 940
Free ventilation cross-section (m <sup>2</sup> )	0.10	0.11	0.18	0.29	0.35	0.48	0.58
Shell opening (mm) W1 x H1	520 x 360	560 x 450	600 x 600	700 x 700	800 x 800	900 x 900	1000 x 1000
Installation depth of the multileaf damper (mm)	175	175	175	175	175	175	175
External dimensions of flange W2 x H2	660 x 500	700 x 590	740 x 740	840 x 840	940 x 940	1040 x 1040	1040 x 1040