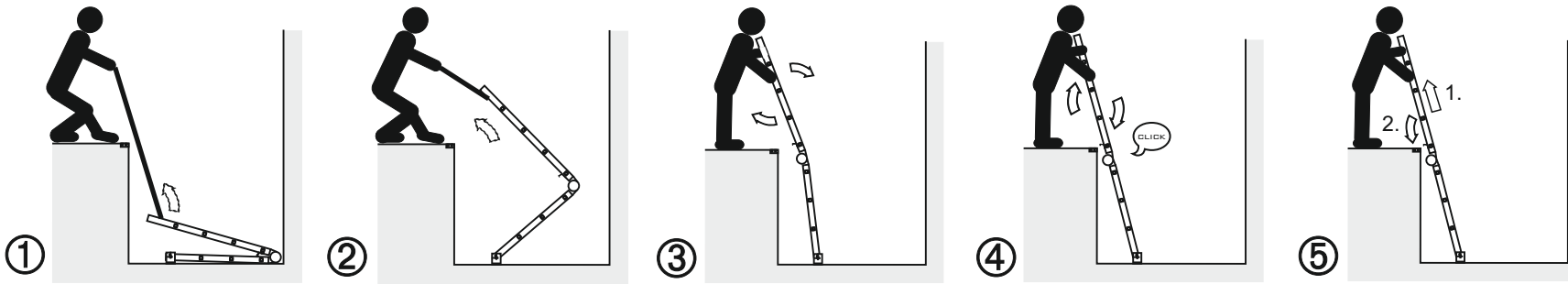
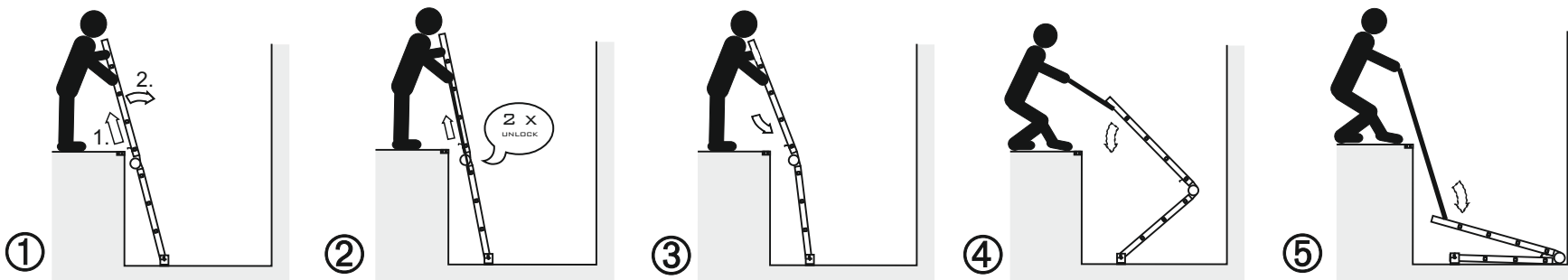


Folding up the ladder into ready-to-use position  
(Attention: mounting lengthwise to the back shaft wall)



- 1 - 2) Pull up the ladder with the wall-mounted chain
- 3 - 4) Pull top of ladder towards you until the hinges on the left and right have audibly locked
- 5) Lift the ladder and fix it to the threshold with the ladder-mounted hook profile  
The hook profile must be adjusted to the appropriate height

Folding down ladder into stow position



- 1) Lift the ladder so you can remove the hook profile from the treshold
- 2) Audibly unlock the hinges by pulling on the ropes left and right
- 3) Hold the ladder at the upper end and push it away from your body until the angle of the hinges is  $\leq 150^\circ$
- 4 - 5) Lower the ladder with the chain into the shaft pit. Fold the ladder completely by further slackening the chain

|                     |  |  |
|---------------------|--|--|
|                     | Material:<br>Aluminium,<br>ST 37,white galvanized                              | Notes:   |
|                     | Date: 08.09.2023   |  |
| Stingl Systems GmbH | Instructions, ladder type E-2.25 m, mounting lengthwise to the back shaft wall | <small>                 Drawing No.:<br/>                 Einbauanleitung_Laengerichtung<br/>                 Photogramm_Leiter_E-2250_EN.cdr             </small> |